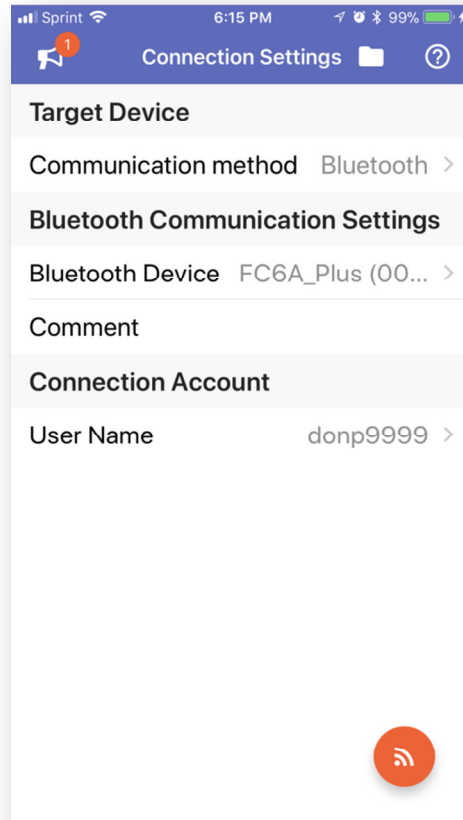


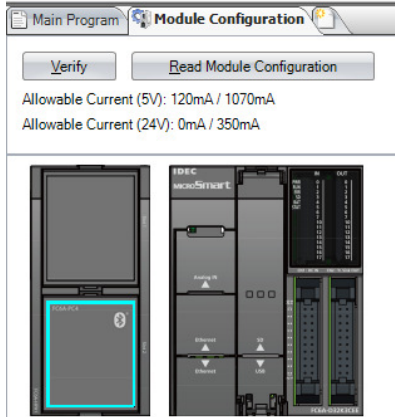
FC6A WindEDIT Lite App with Bluetooth Communication



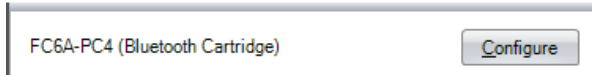
1. Configuring Bluetooth Cartridge	2
2. Pairing your iPhone and Bluetooth cartridge.....	4
3. Using WindEDIT App with Bluetooth	5

1. Configuring Bluetooth Cartridge

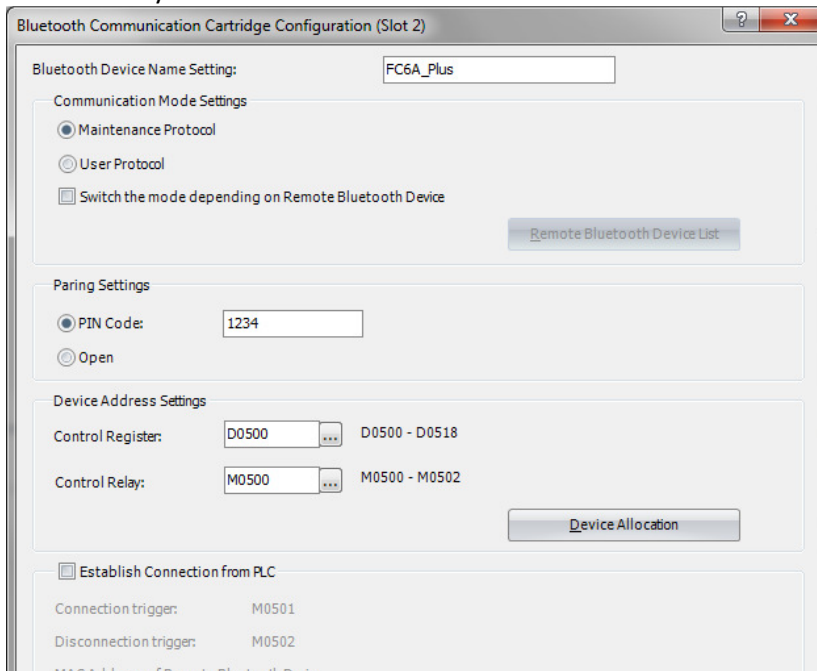
1. In WindLDR Configuration tab, add the FC6A-HPH1 cartridge base module and FC6A-PC4 Bluetooth cartridge.



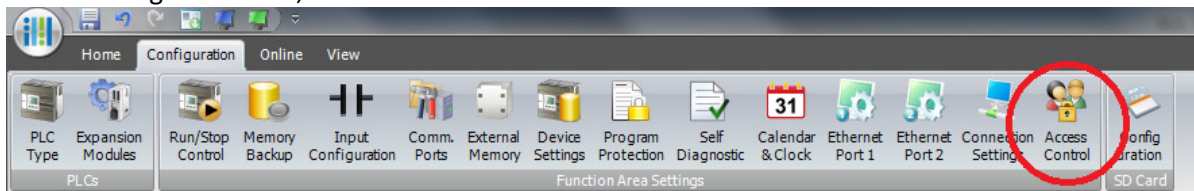
2. Click the Configure button.



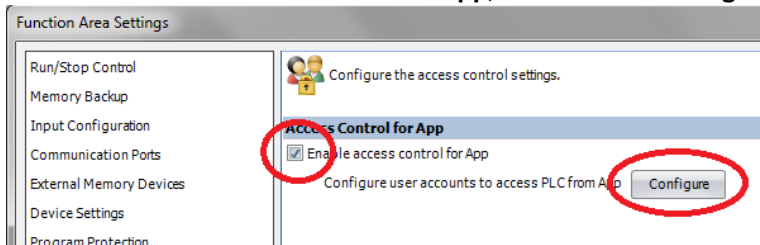
3. Fill in the following parameters.
Bluetooth Device Name Setting: **FC6A_Plus**
Communication Mode Settings: **check Maintenance Protocol**
Pairing Settings: **1234**
Control Register: **D500**
Control Relay: **M500**



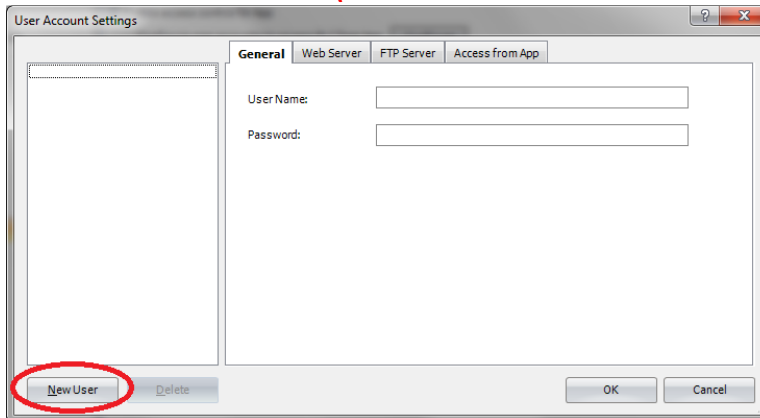
4. Click OK.
5. Under Configuration tab, click **Access Control**.



6. Check the **Enable access control for App**, and click the **Configure** button.



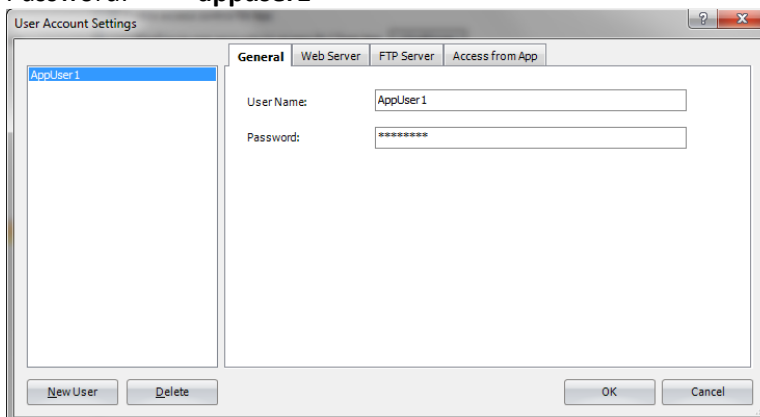
7. Click the **New User** button. **(PLEASE MAKE SURE YOU CLICK THIS BUTTON)**



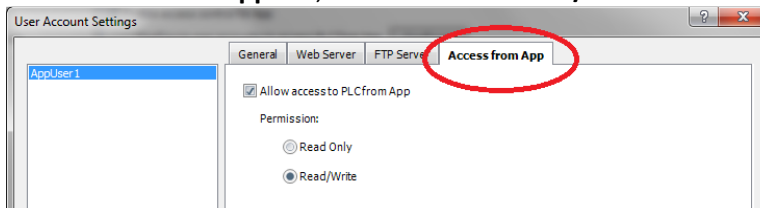
8. Assign User Name and Password.

User Name: **AppUser1**

Password: **appuser1**



9. Click **Access from App** tab, and make sure **Read/Write** is checked.

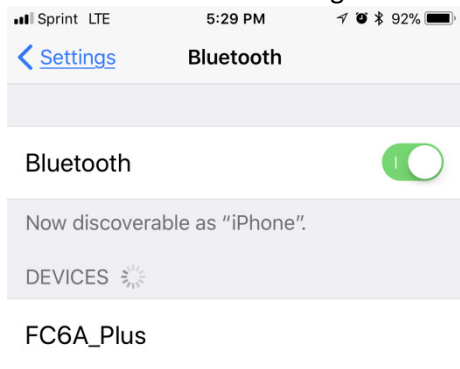


10. Click OK, OK to close the dialog boxes.

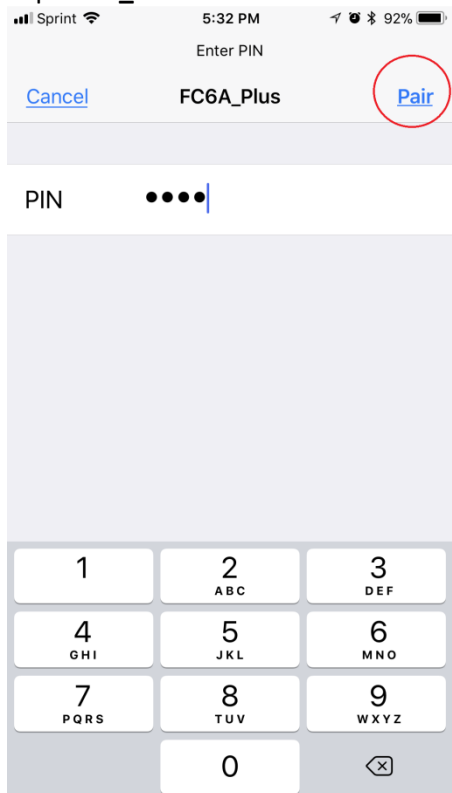
11. Download project.

2. Pairing your iPhone and Bluetooth cartridge

1. Turn on Bluetooth in Settings → Bluetooth



2. Tap **FC6A_Plus** and enter **PIN = 1234**. Tap **Pair**.

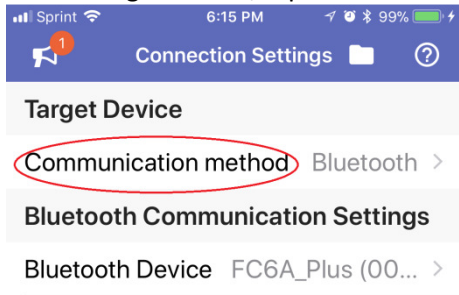


3. When pairing is successful, you'll see the Connected status below.

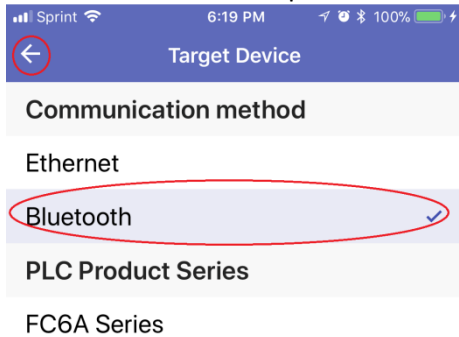


3. Using WindEDIT App with Bluetooth

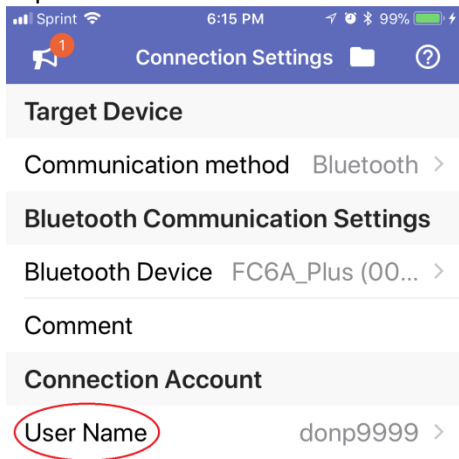
1. Launch WindEDIT App
2. Under Target Device, tap **Connection method**



3. Select **Bluetooth** and tap the ← arrow

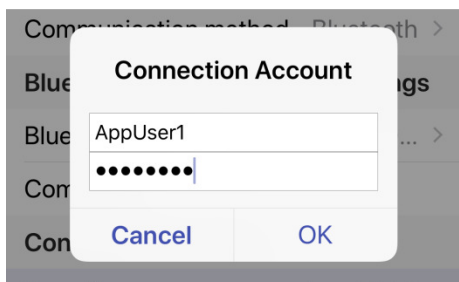


4. Tap **User Name**



5. Enter User Name and Password as below, and tap **OK**.

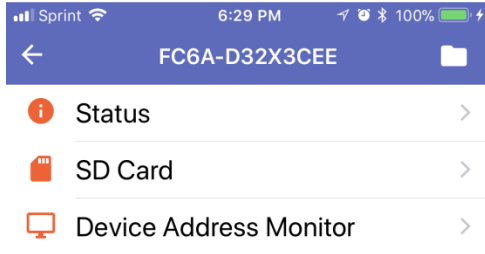
User Name: **AppUser1**
Password: **appuser1**



6. Tap the connect orange icon

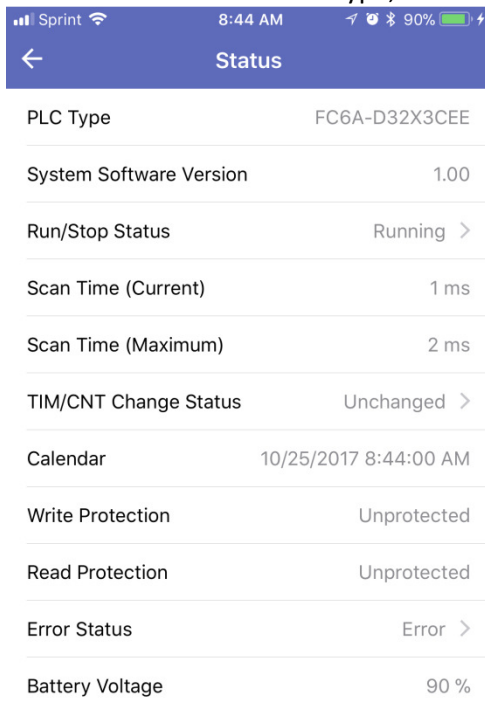


7. If connected successfully, your screen will look like this.



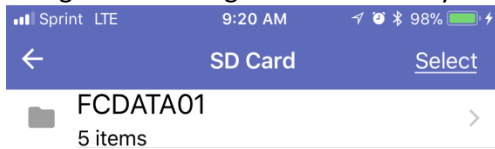
8. Tap **Status**.

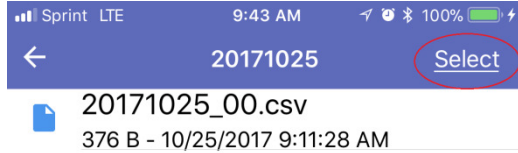
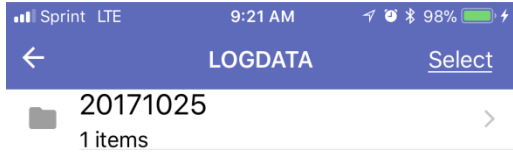
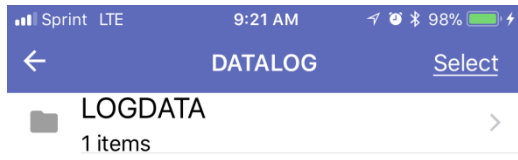
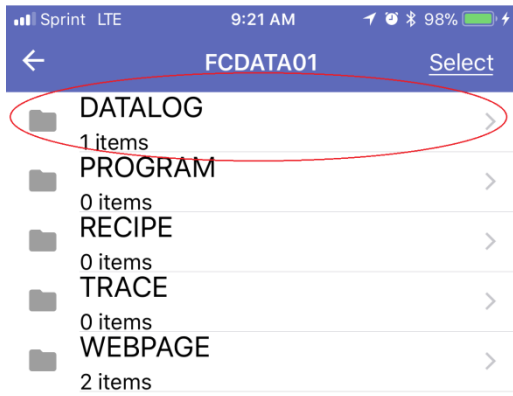
The Status screen is similar to the WindLDR Monitor PLC Status screen, where user can monitor the status of the connected PLC such as PLC Type, Firmware, Run/Stop, Scan Time, Error Status, Battery Voltage, etc.



9. Tap **SD Card**. The SD Card is greyed out if there's no SD card inserted.

Navigate to the LogData folder until you see the .csv file.

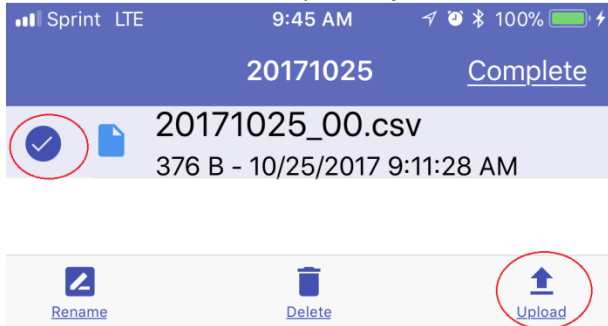




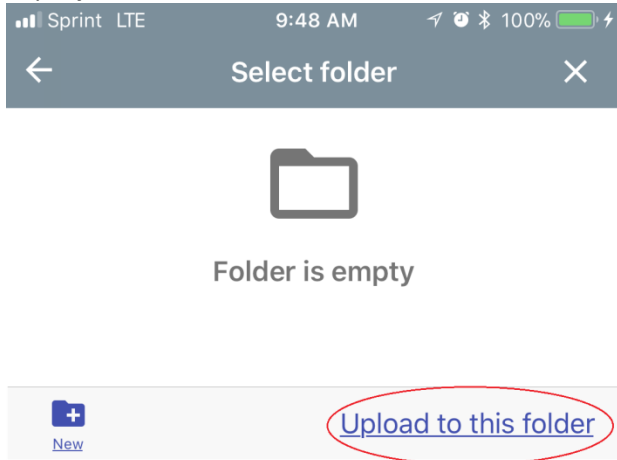
10. Tap **Select**



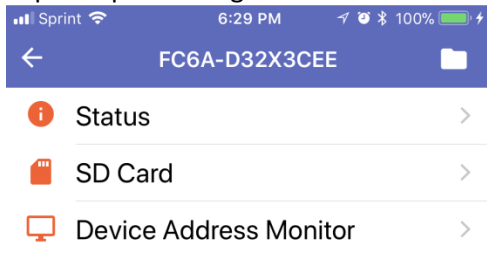
11. **Select** the .csv file and tap the **Upload** icon



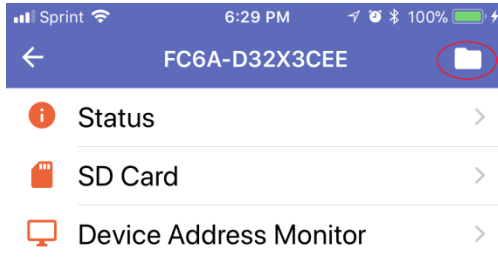
12. Tap **Upload to this folder**



13. Tap Complete and go back to this screen



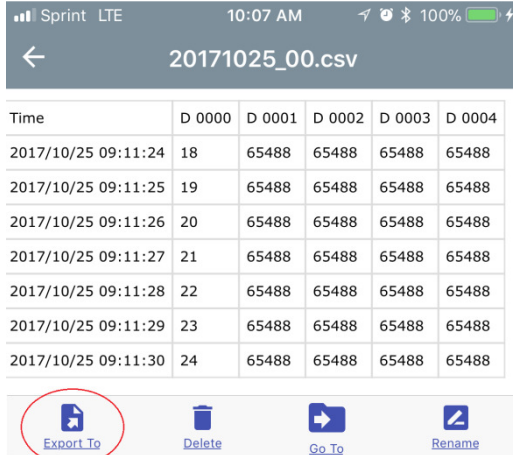
14. Tap the folder icon



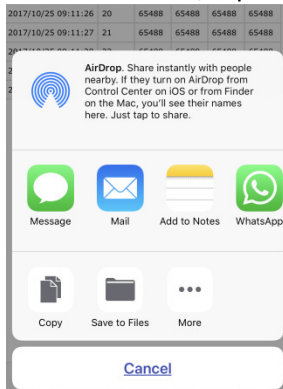
15. Tap the .csv file



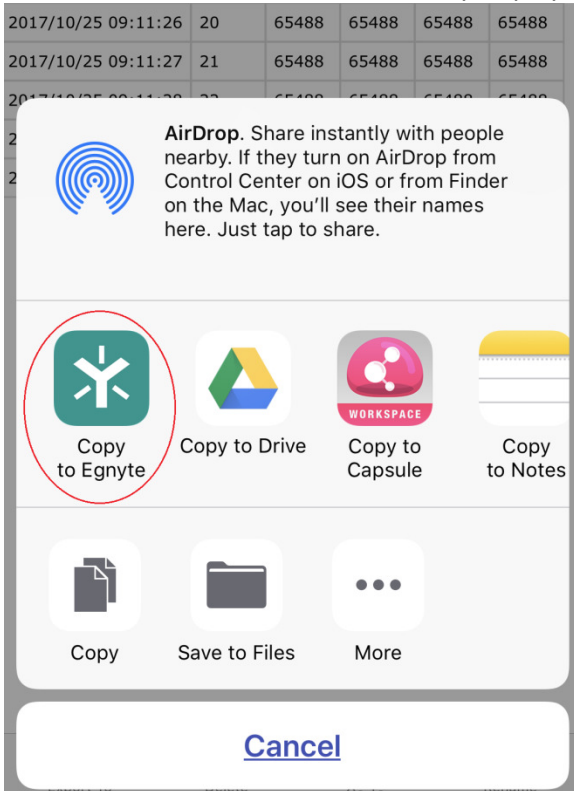
16. Your log file is displayed here. Tap **Export to**, to Text, Email or upload .csv file to a cloud database.



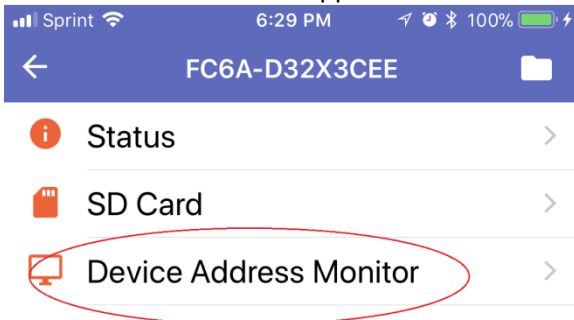
17. To Text or Email, tap the Message or Mail icon.



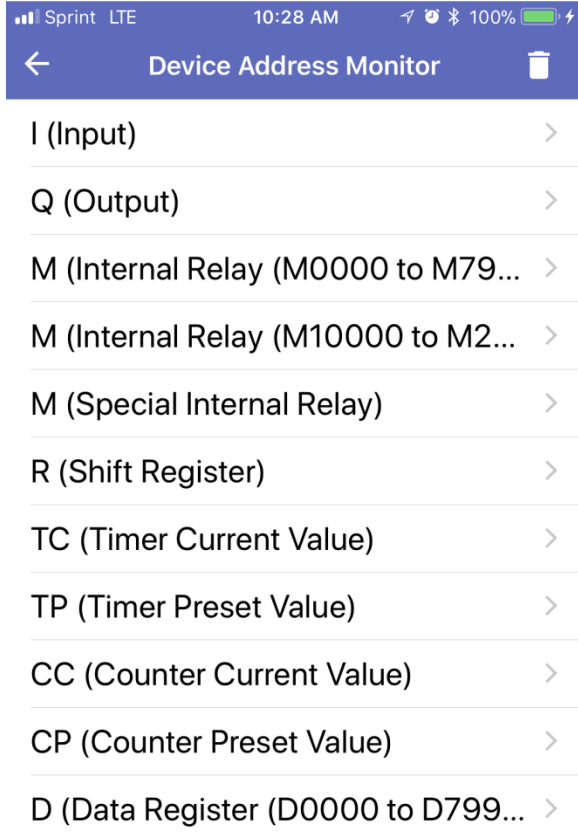
18. To send it to a cloud database, tap the database icon. Tap Copy to **Egnyte** icon.
Cloud database icons will automatically display here if you have the database App installed.



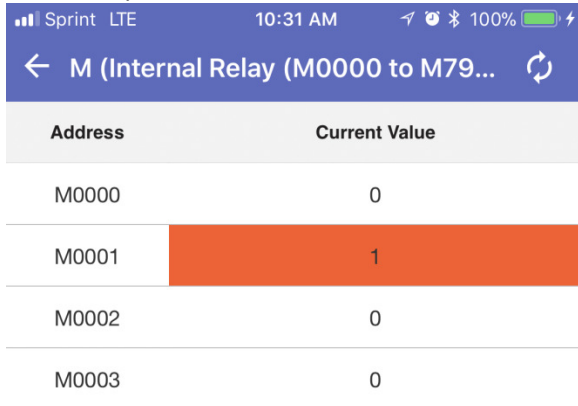
19. Go back to the WindEDITApp home screen below and tap Device Address Monitor



20. This is where you can monitor and control all the PLC parameters I, Q, M, R, T, C, and D. Tap **M (Internal Relay)**

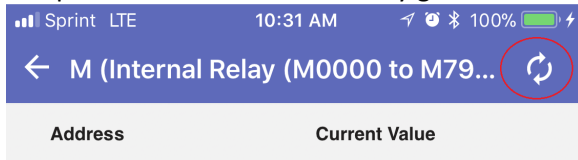


21. **Double tap M0001** to turn it on.



22. Tap this icon for auto refresh.

PLC parameters will automatically get refresh in the App.



- 23. Run/Stop: Start and Stop the PLC
- Download: Download program to PLC with ZLD file store in App Folder
- Upload: Upload ZLD program from PLC and store in App Folder
- Format: Format the SD card

