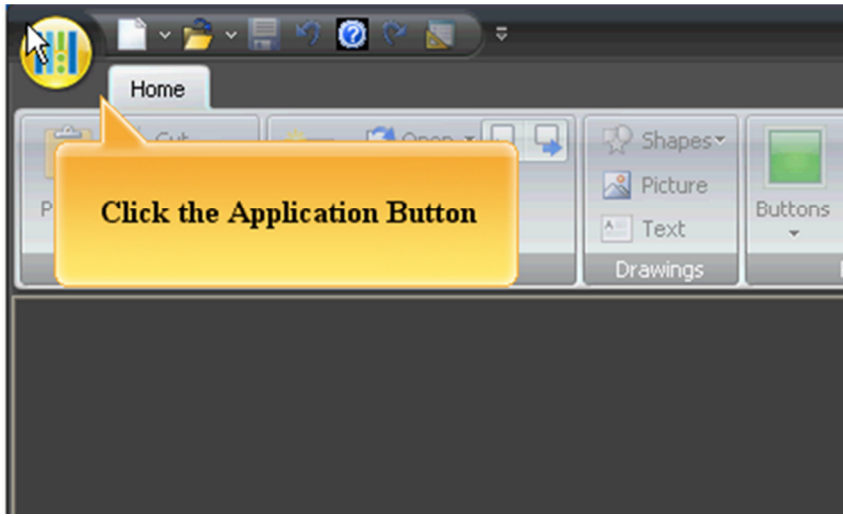


Application Notes

How to Create a New Project

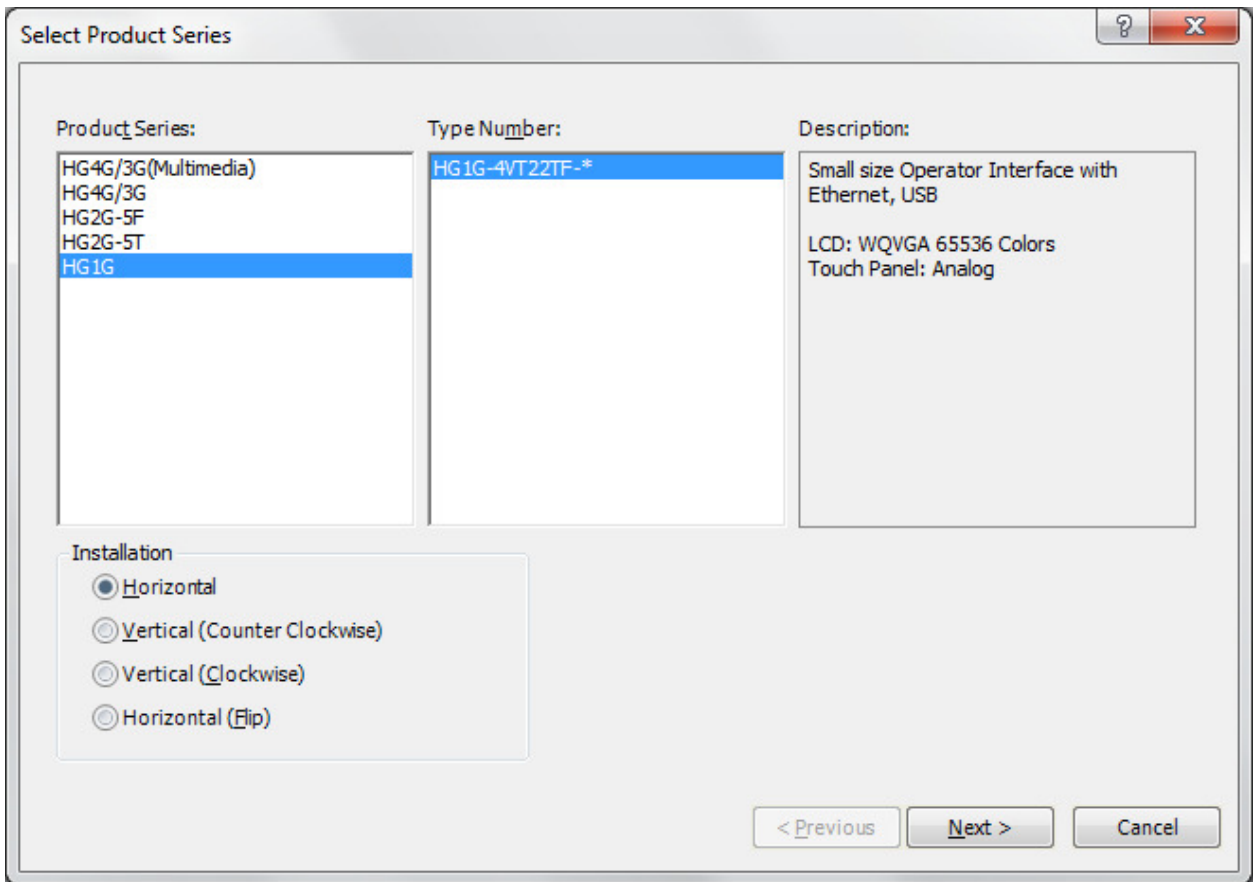
- 1) Launch WindOI NV4 software
- 2) Click the Application Button



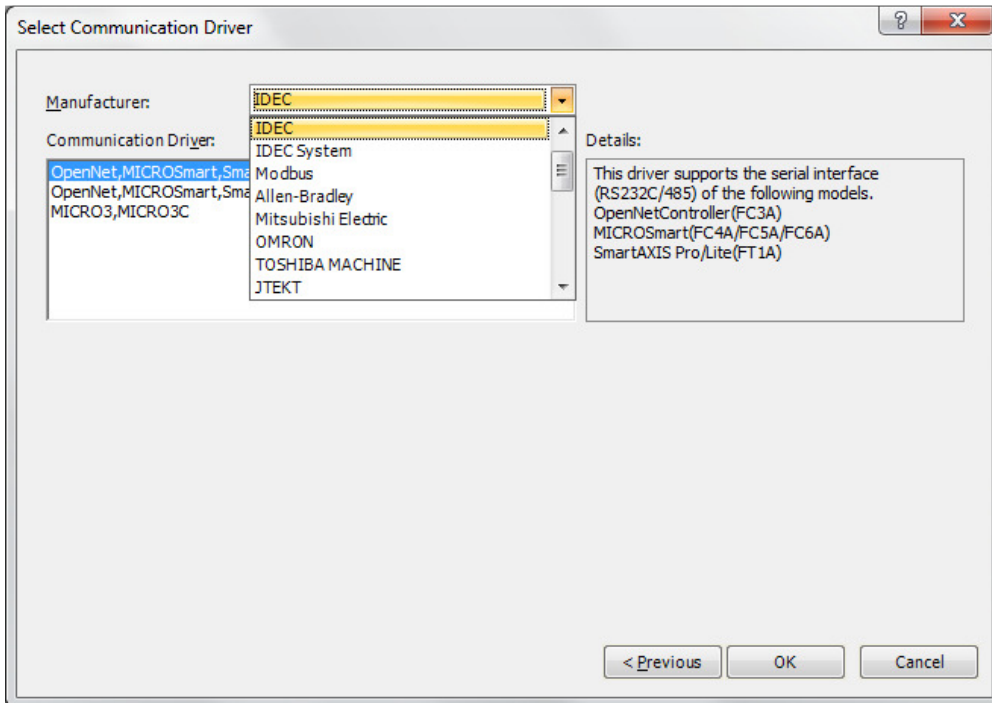
- 3) Select "New" to create a new project



4) Select a Product Series and Click “Next”



5) Select a Communication Driver. If the HMI is used as a standalone unit, select “Not use” and click “OK” to close the dialog box.



- 6) Below is the Screen Properties of the Base Screen. Enter a Screen Title and click the "OK" to continue. You will see a base screen 1 as below.

Screen Properties

General Options

Screen Type: Base Screen

Number: 1

Title: Main Menu

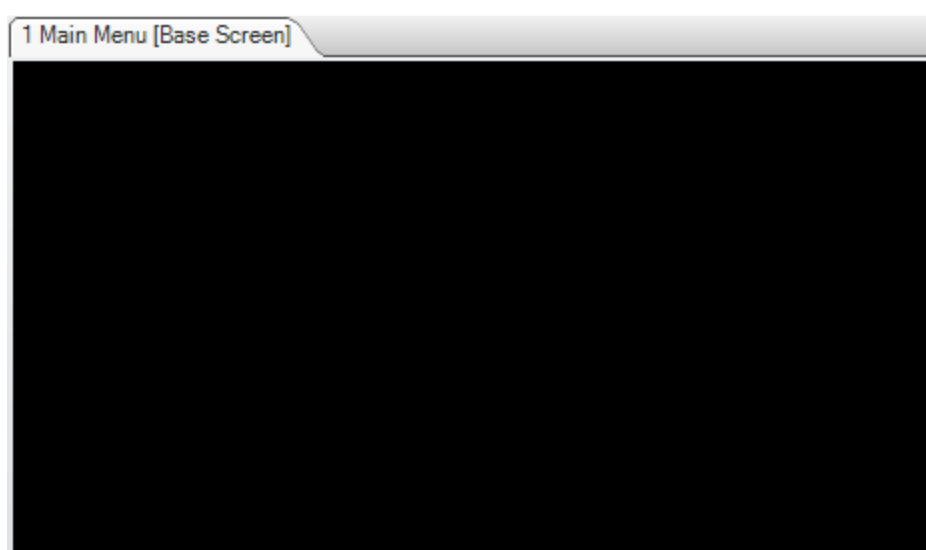
Size

Width: 480 Height: 272

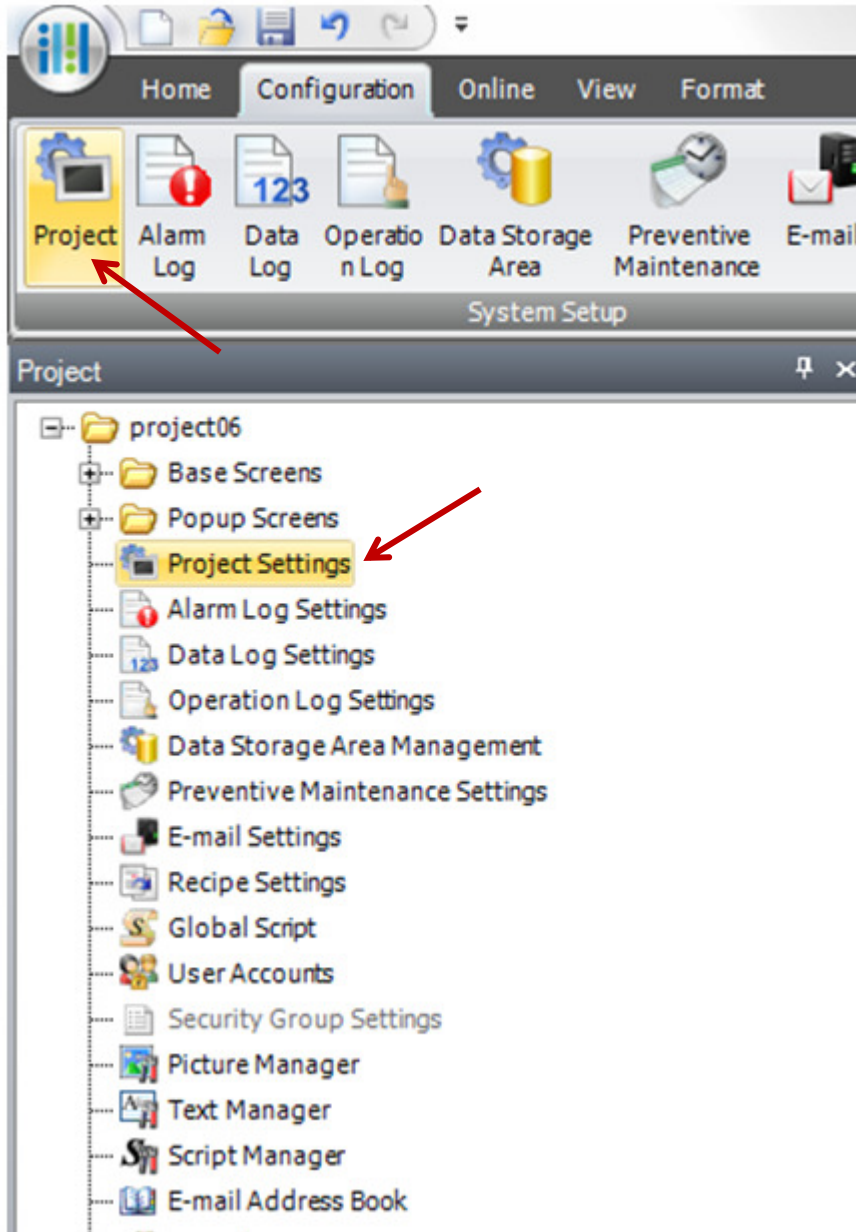
Screen List:

No.	Title	Screen Type

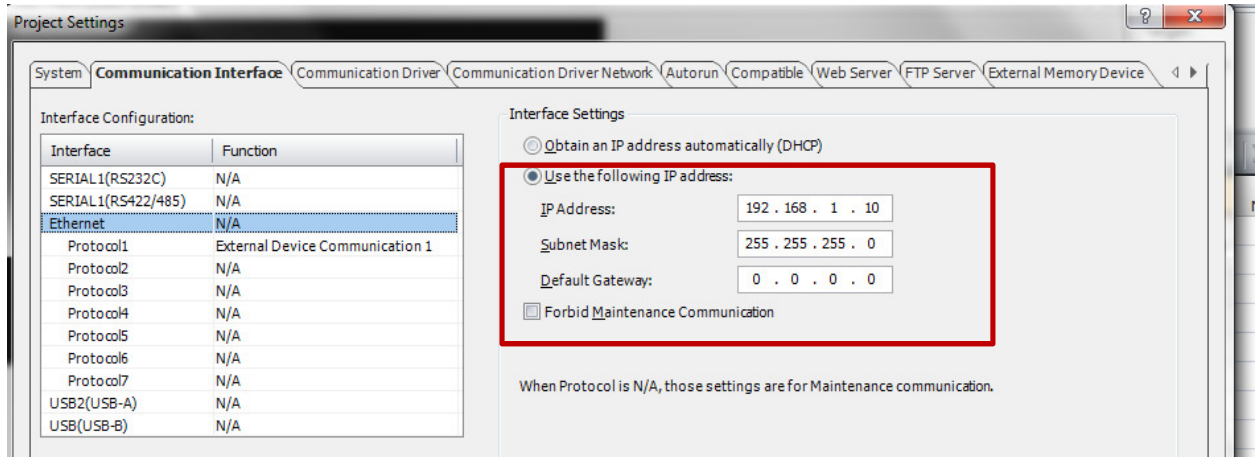
OK Cancel



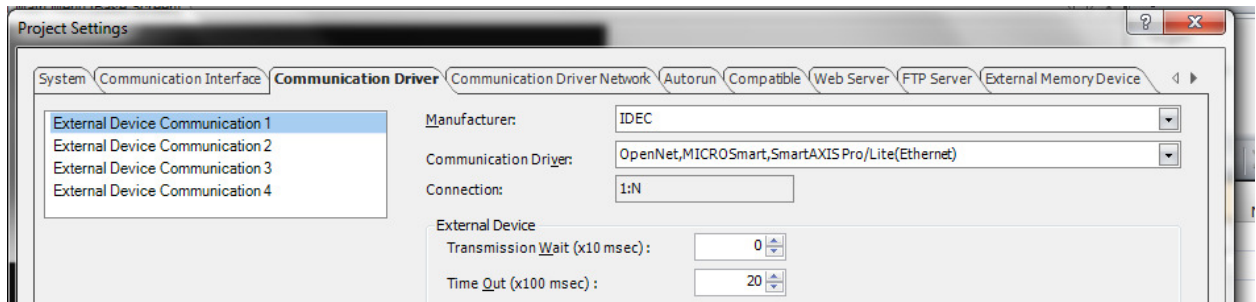
- 7) To configure the settings in the project, click on “Project Settings”
Two ways to select “Project Settings”



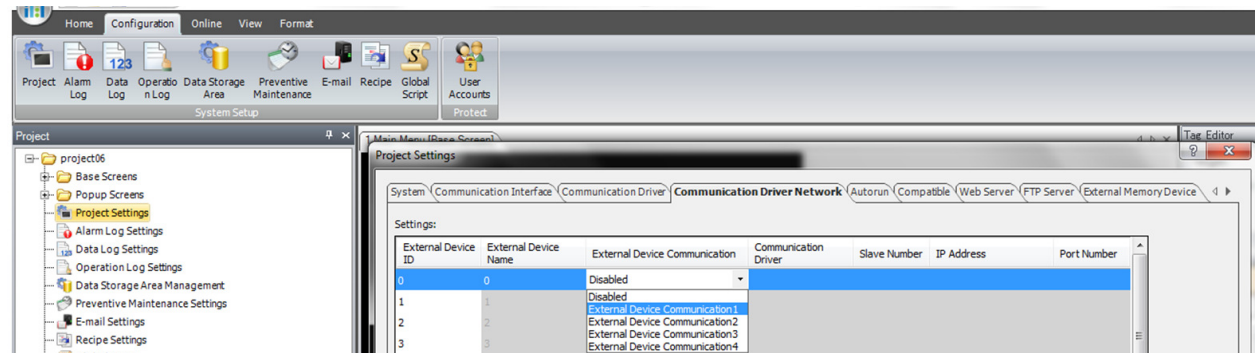
- 8) In Project Settings, select the Communication Interface tab. Under Interface Configuration, select Ethernet and enter the **HMI IP address and Subnet Mask** (the IP address may differ depending on the environment)

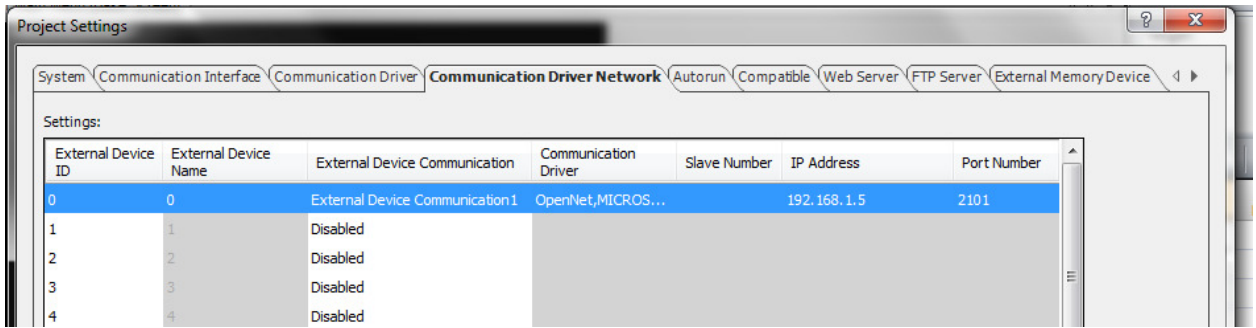


- 9) Select the “Communication Driver” tab to configure the PLC communication driver.

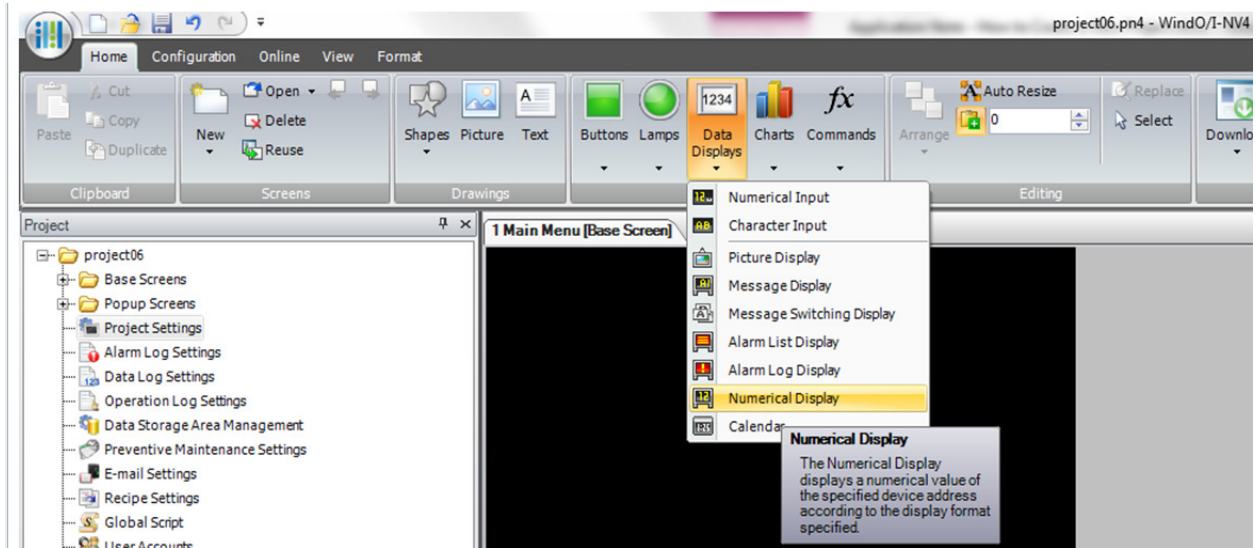


- 10) Select the “Communication Driver Network” tab. Under the External Device Communication, click on down arrow to select the External Device Communication #. If the driver that you selected is an Ethernet driver, enter the PLC (Host) IP address under the IP address column. Click the OK button to close the dialog box.

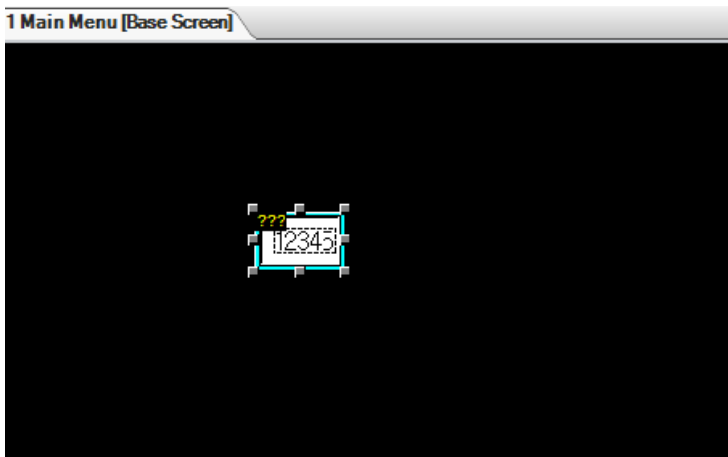




11) Let's place a Numerical Display on a screen. Under Home tab, Select "Numerical Display" and drop it on a screen.



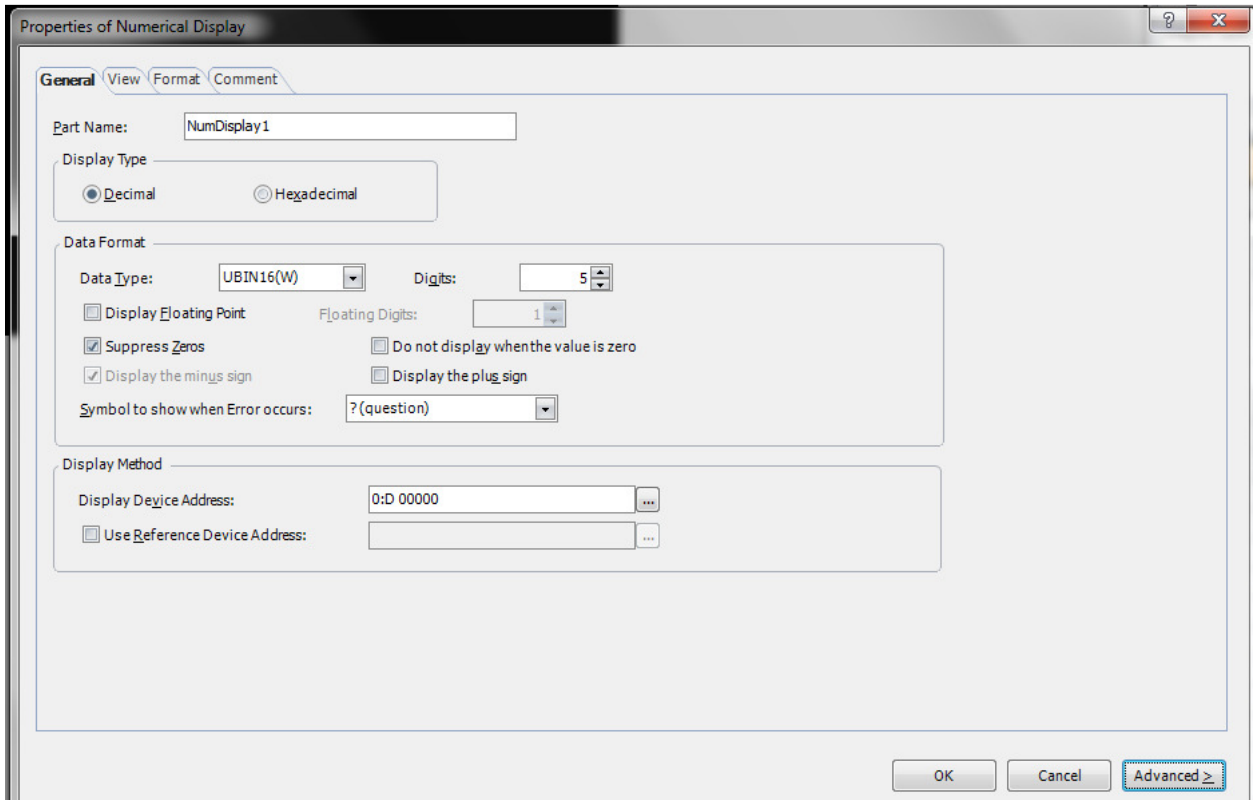
12) Double click on "Numerical Display" to open the Properties of Numerical Display.



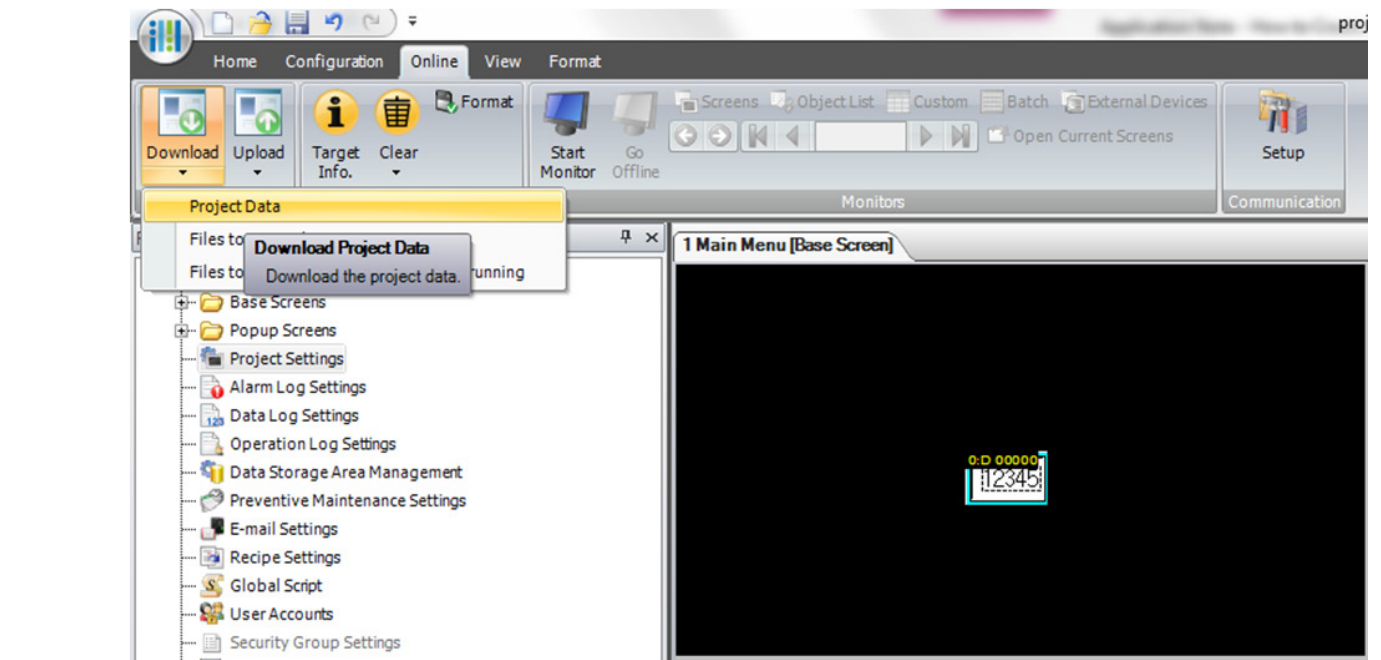
13) Properties of Numerical Display:

(a) Select Display Type

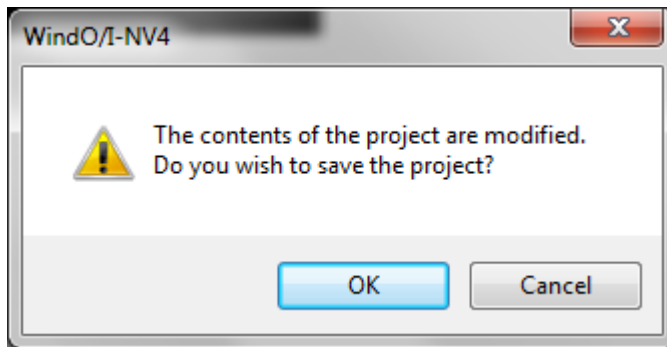
- (b) Select Data Type: Bin16, Bin32, Float32, etc...
- (c) Enter Destination Device: this can be External Device address or HMI internal address
- (d) Click OK to close the Properties of Numerical Display



- 14) Select "Online". Click "Download" and "Project Data" to download the program to the HMI.

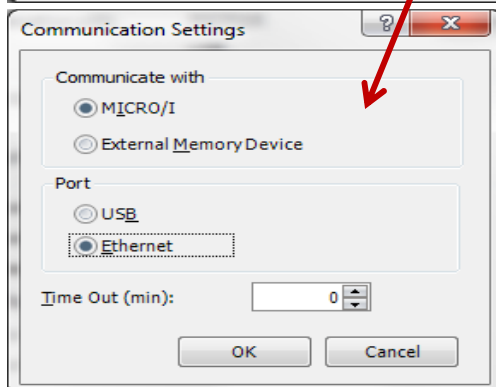
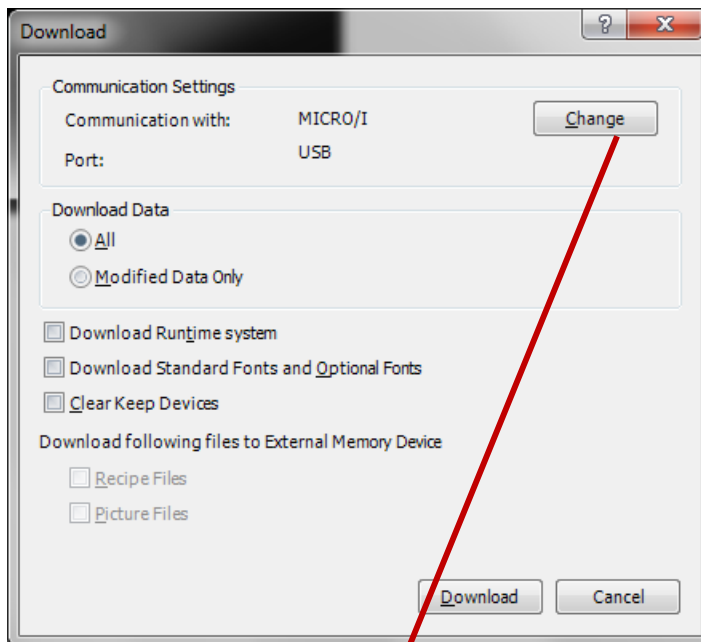


15) Click OK to save your project.

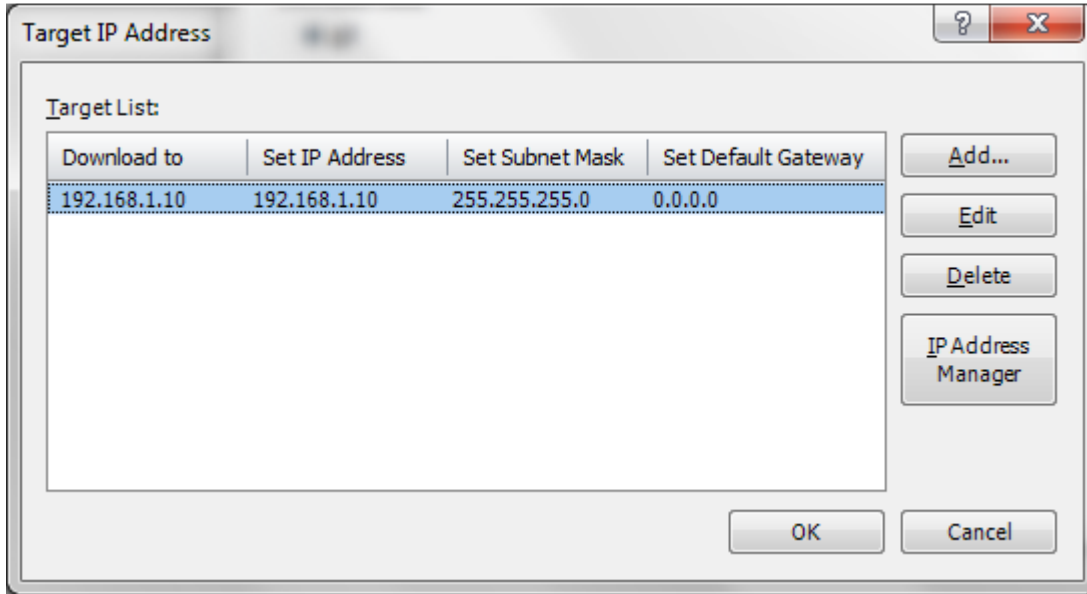


16) In a Download dialog box:

- (a) Communication with: MICRO/I
- (b) Port can be a USB or Ethernet. If you want to download via Ethernet, click "Change" to select "Ethernet"
- (c) Download Data: Select All for the first time
- (d) Click "Download"



To download a project over Ethernet, please make sure you have a Cat 5 cable connected between the PC and the HMI. And also, you enter the HMI IP address on the HMI unit before the program is loaded. Under “Target IP Address” dialog box, enter the same HMI IP address by clicking Edit and click OK to download.



To download a project over USB, please make sure a standard USB cable is connected between the PC and the HMI. The USB cable can be purchased from IDEC; the cable part number is **HG9Z-XCM2A**.

If the program is loaded successfully, you would see the Download Complete message as below.

