

Application Notes

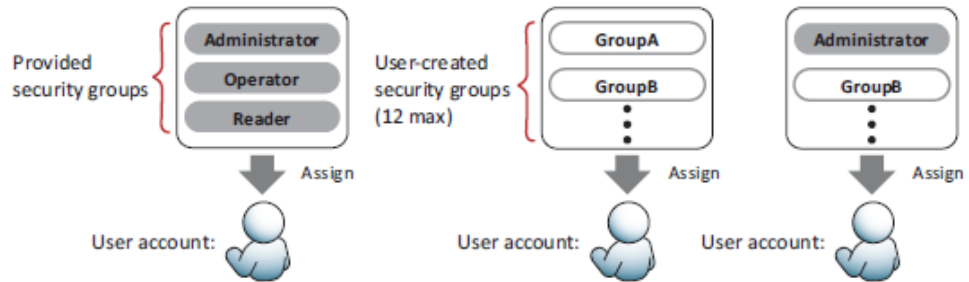
Security Function

Multiple users can password protects project, screens and objects

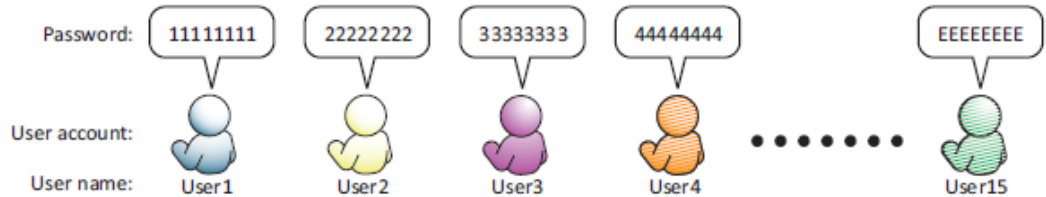
In WindO/I-NV4, security groups are used as accounts.

There are two types of security groups: provided security groups (Administrator, Operator, and Reader) and user-created security groups. One or more of these security groups can be assigned to users.

One or more users must always be assigned to Administrator.

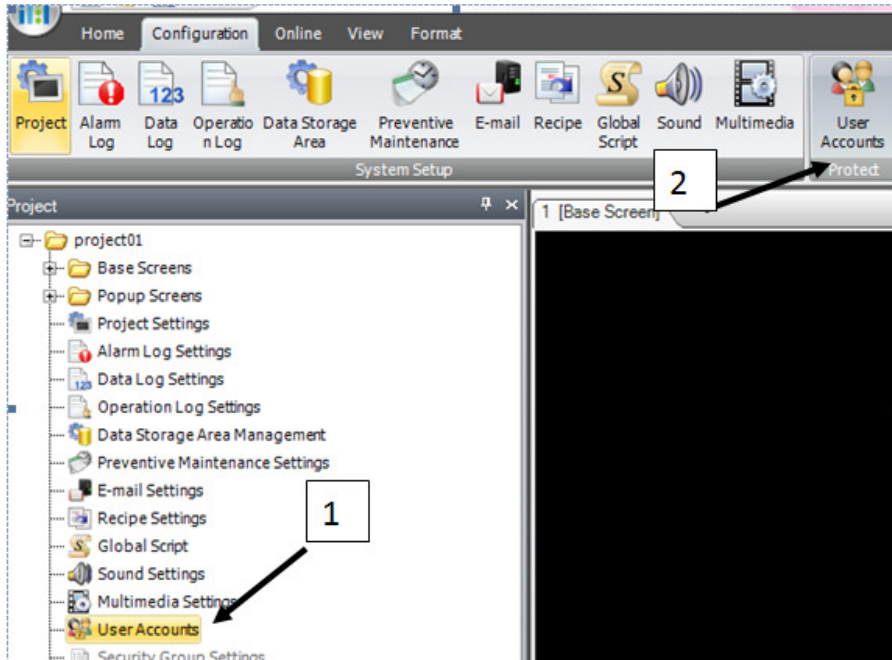


A user name and password are associated with a user account and up to 15 user accounts can be created.



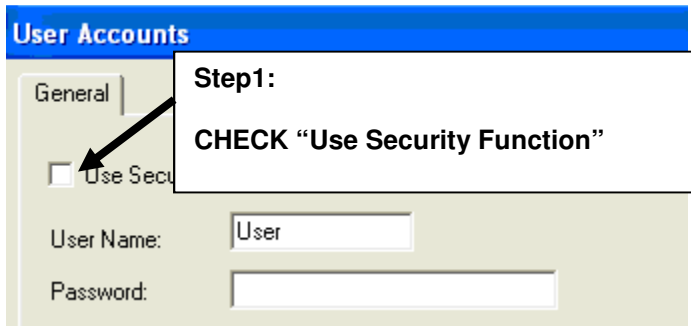
“User Accounts”

- Two ways to select “User Accounts”

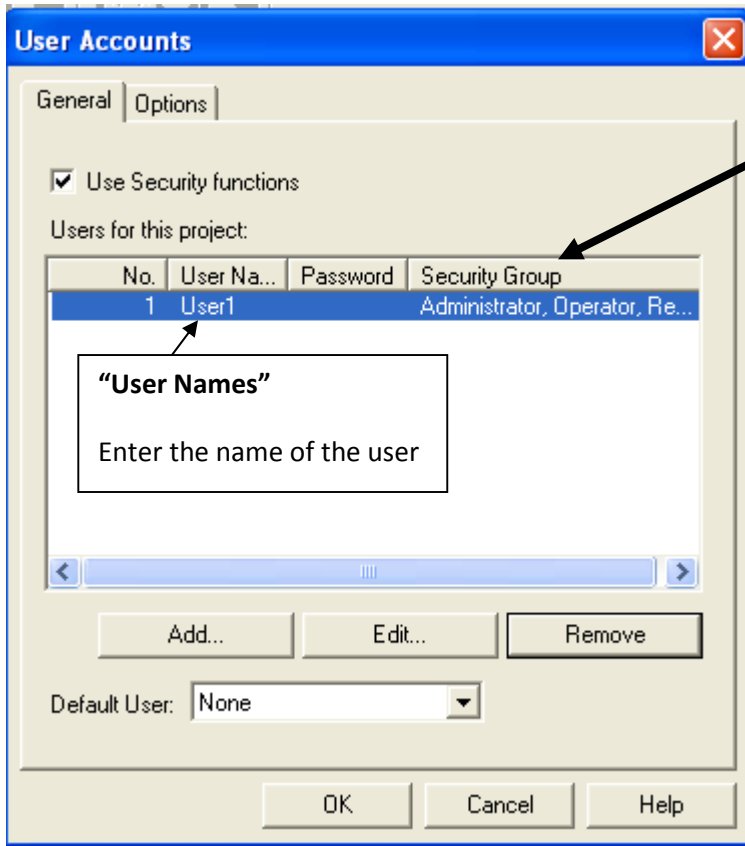


General Information:

Enable “Use Security Function”.



Enter User Names, Passwords, Security Group



“Security Group”
 You can create a new Security Group, such as Managers, Supervisors, Maintenance, etc... or use the provided security groups: Admin, Operator, or Reader

“User Names”
 Enter the name of the user

Default Security Group:

Administrator:

- Have a full access to the project:
 create, edit, upload/download, monitor, access to Web Server and open the project

Operator:

- Limited to changing or monitoring the data on the Operator Interface.
- Upload data from the SD or USB flash drive
- Web Server access

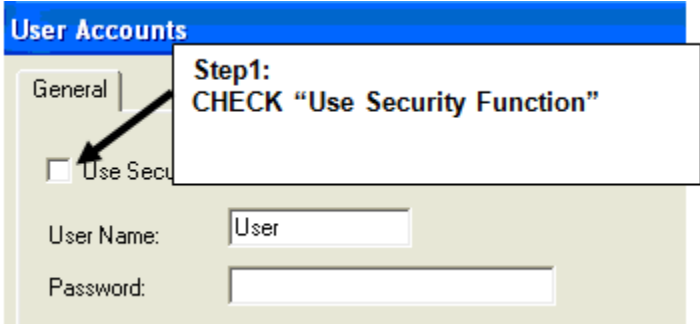
Reader:

- Read out data only
- Upload data from the CF Card
- Web Server Access

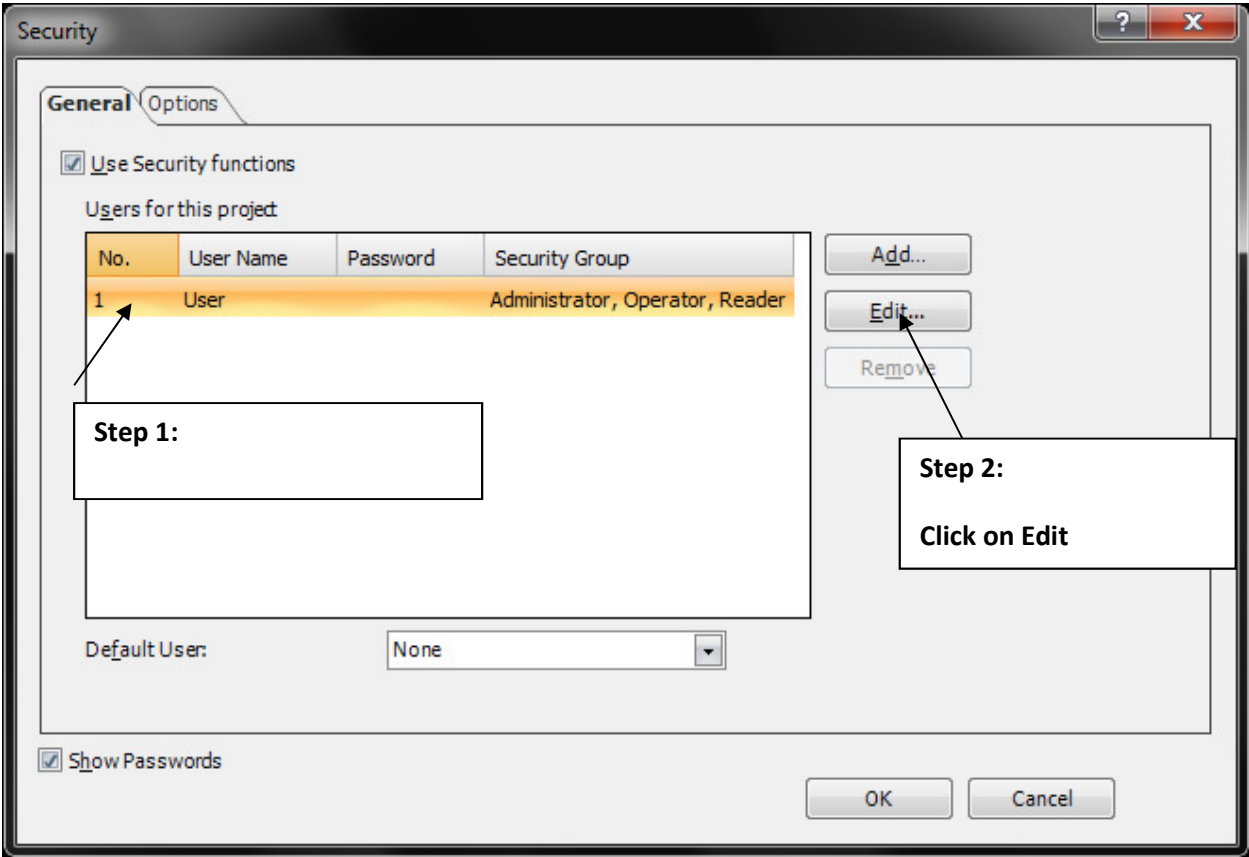
Note: Administrator/Operator/Reader can only be used More than ONCE under Security Group.

How do you password protect a project and a base screen?

- 1. Select "User Account"
- 2. Enable Use Security Functions



- 3. User Account: Follow the steps...



4. Enter your User Name and Password

Security

General Options

Use Security functions

Users for this project

No.	User Name	Password	Security Group
1	User		Administrator, Operator, R

Change User Account

General Group Membership

Number: 1

User Name: Emily

New Password: 1111

Default User:

Show Passwords

Password:
You may leave it blank & the project will not be password protected. However if you chose to add a Password, then anytime you download/upload/open this project, you will be prompted to enter your password.

5. Click on "Group Membership" tab.

Select Operator and Reader then press the Delete button to move it to Security Group as shown.

Change User Account

General **Group Membership**

To: Emily

Administrator

Security Group:

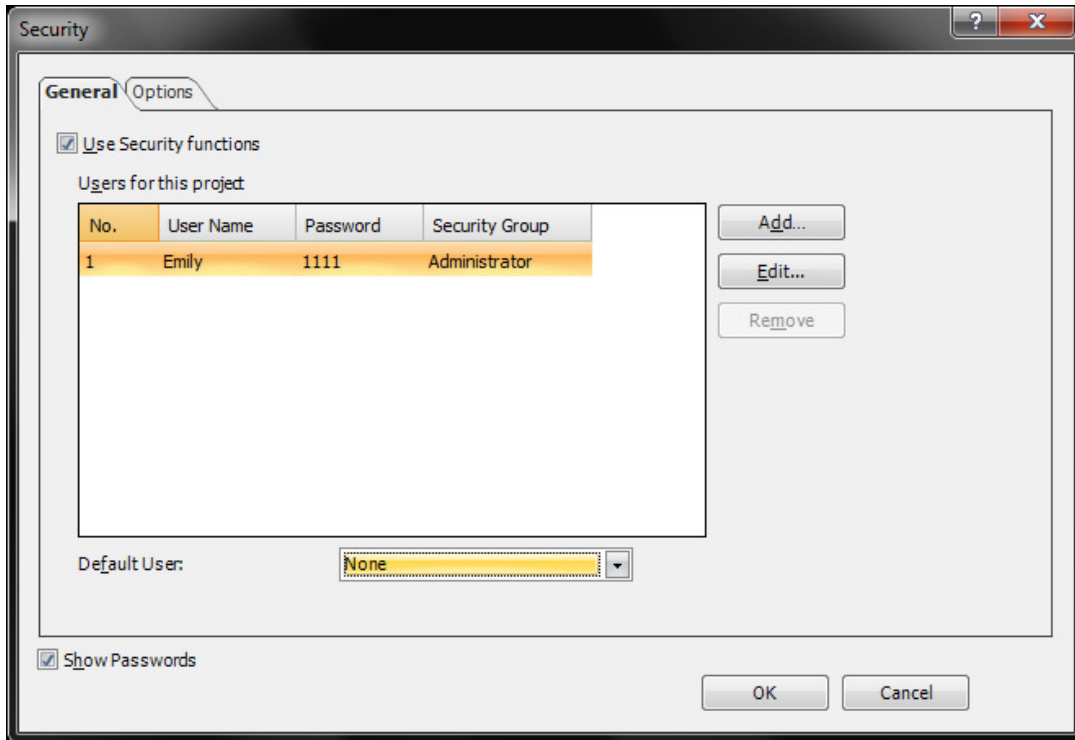
Administrator
Operator
Reader

<< Copy
Delete
Add...
Rename...

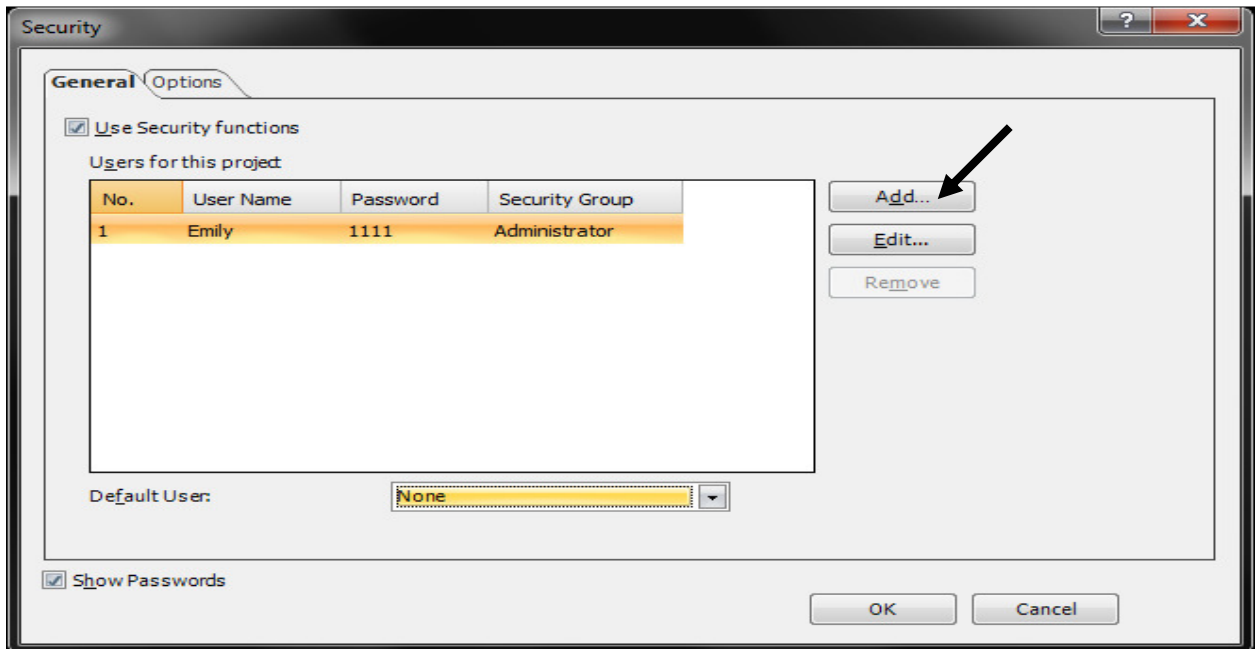
Description:
Administrator can create a project or do the operation that affects the running of MICRO/I such as a download.
This group must be used by any one of users.

OK Cancel

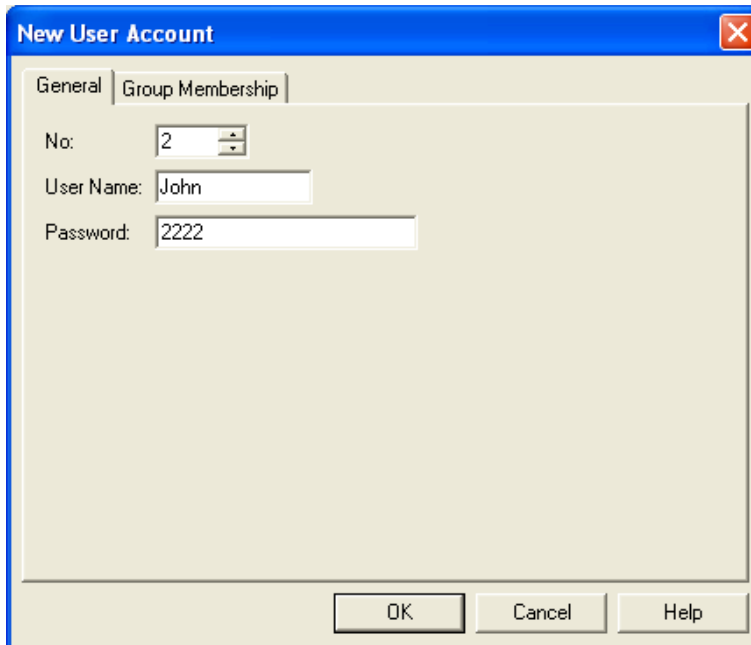
Click the OK button and this is what you should see:
Emily has full access to the project.



- Next, you can add multiple users and groups to password protect screens. In this example, screen 2 is password protected. Click the Add button to add a New User.

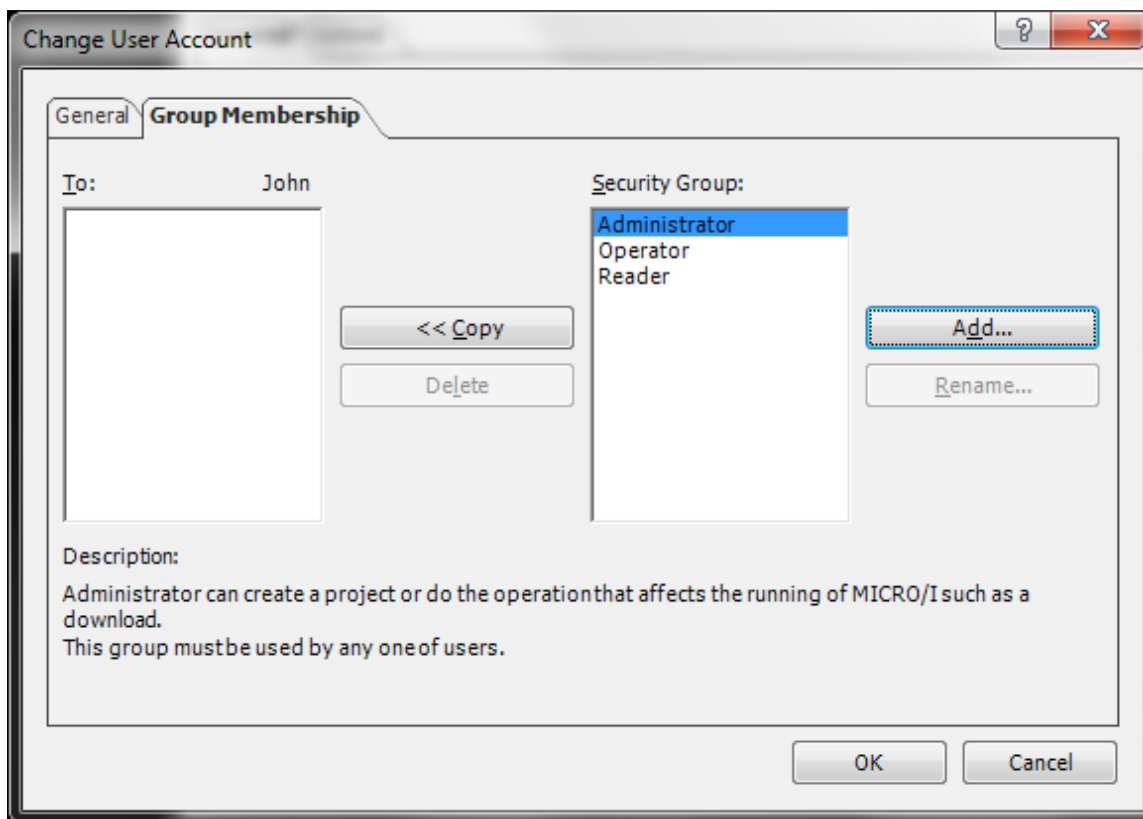


Enter User No. 2, User Name and Password.



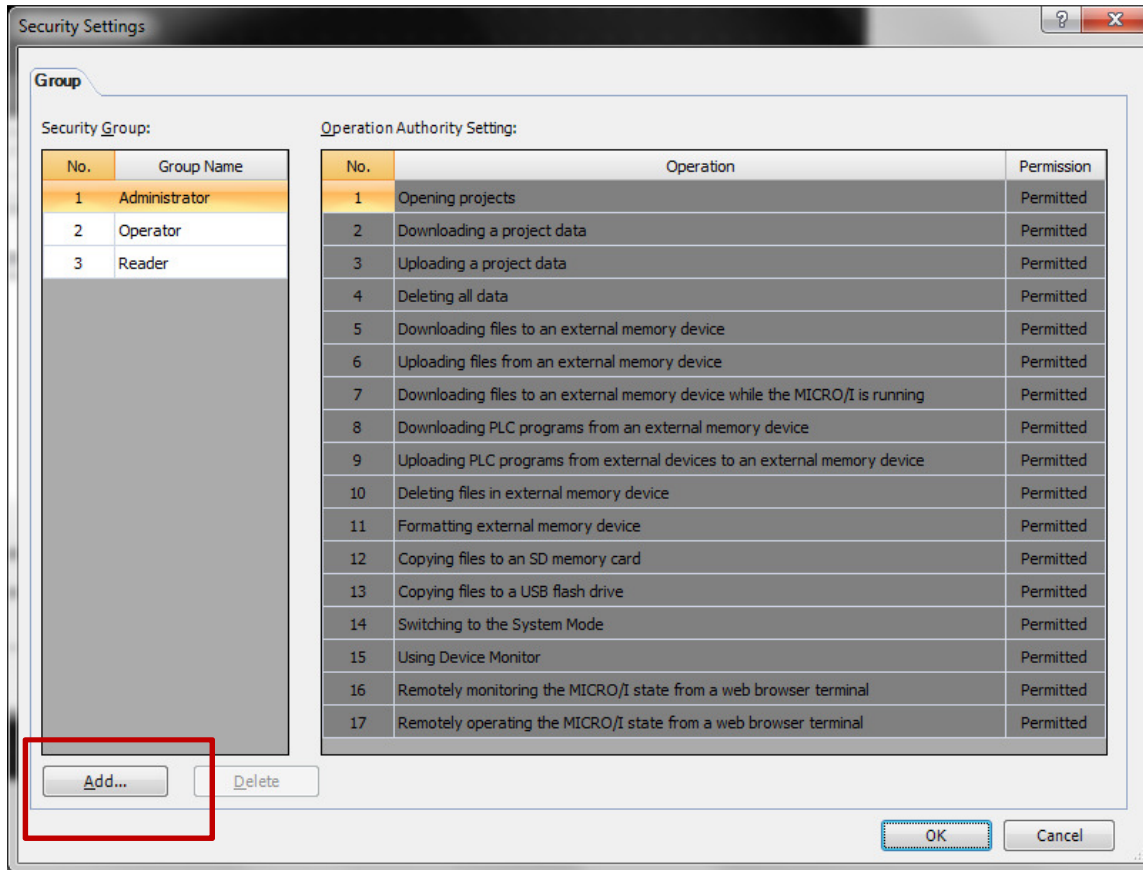
The image shows a 'New User Account' dialog box with two tabs: 'General' and 'Group Membership'. The 'General' tab is active. It contains three input fields: 'No.' with a dropdown menu showing '2', 'User Name' with the text 'John', and 'Password' with the text '2222'. At the bottom, there are three buttons: 'OK', 'Cancel', and 'Help'.

7. Next, click the Group Membership tab. You can either assign John to an existing group (Administrator, Operator, and Reader) or add a new group under Security Group by click "Add".



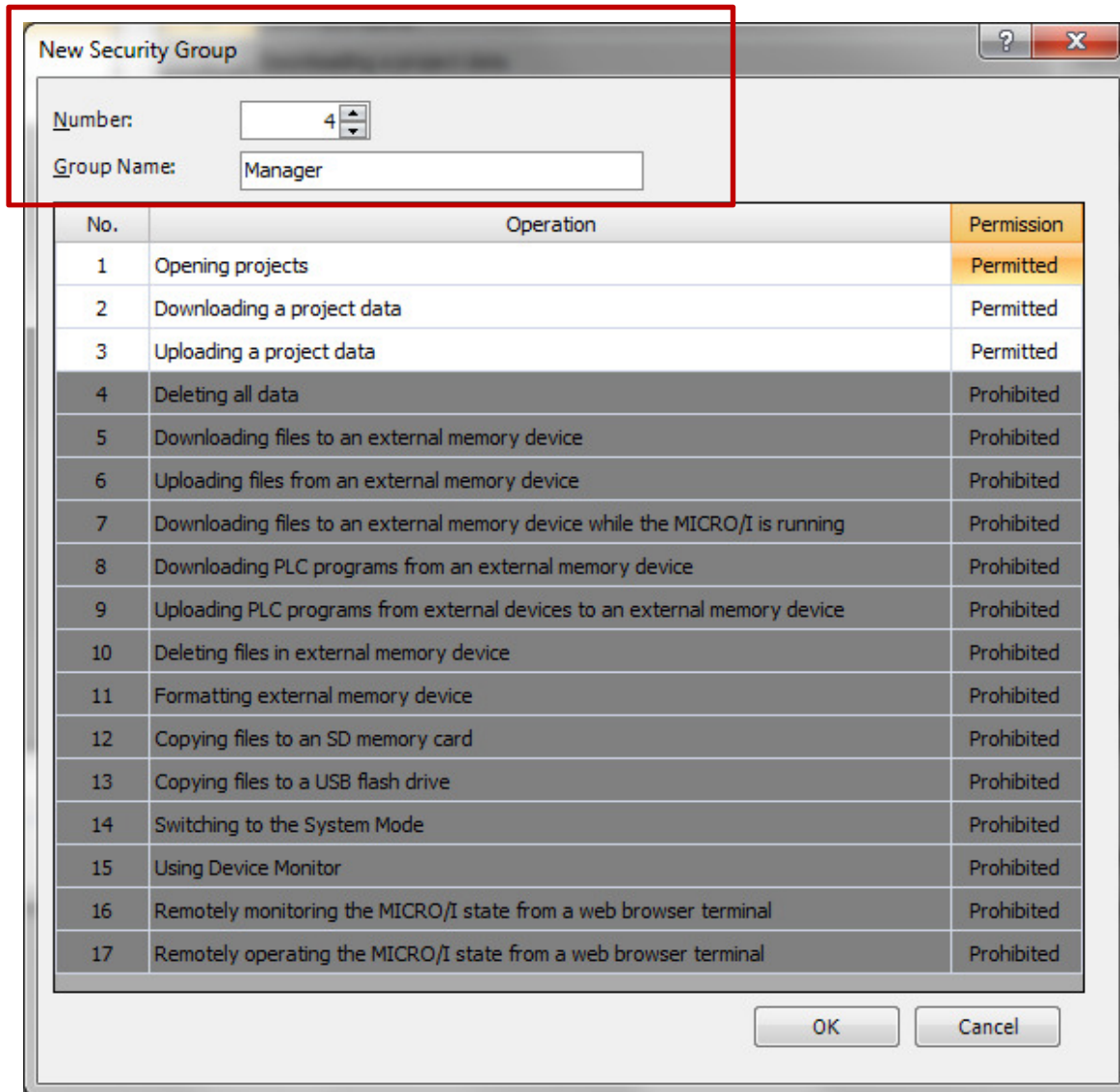
The image shows a 'Change User Account' dialog box with two tabs: 'General' and 'Group Membership'. The 'Group Membership' tab is active. It features a 'To:' field containing 'John' and a 'Security Group:' list box containing 'Administrator', 'Operator', and 'Reader'. The 'Administrator' group is selected. Below the list box are three buttons: '<< Copy', 'Delete', and 'Add..'. To the right of the list box are two buttons: 'Add..' and 'Rename...'. At the bottom, there are two buttons: 'OK' and 'Cancel'. A 'Description:' section at the bottom left contains the text: 'Administrator can create a project or do the operation that affects the running of MICRO/I such as a download. This group must be used by any one of users.'

8. Click “Add” at the bottom left corner to add a new Group on Security Settings.

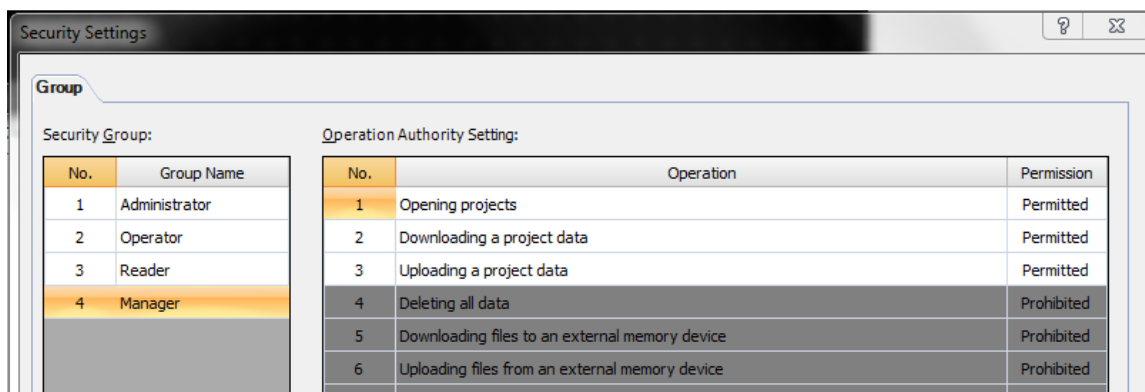


Enter a Group Number and Group Name. Also, double click on the Permission column to change the Permission to either Permitted or Prohibited for the first 3 operations.

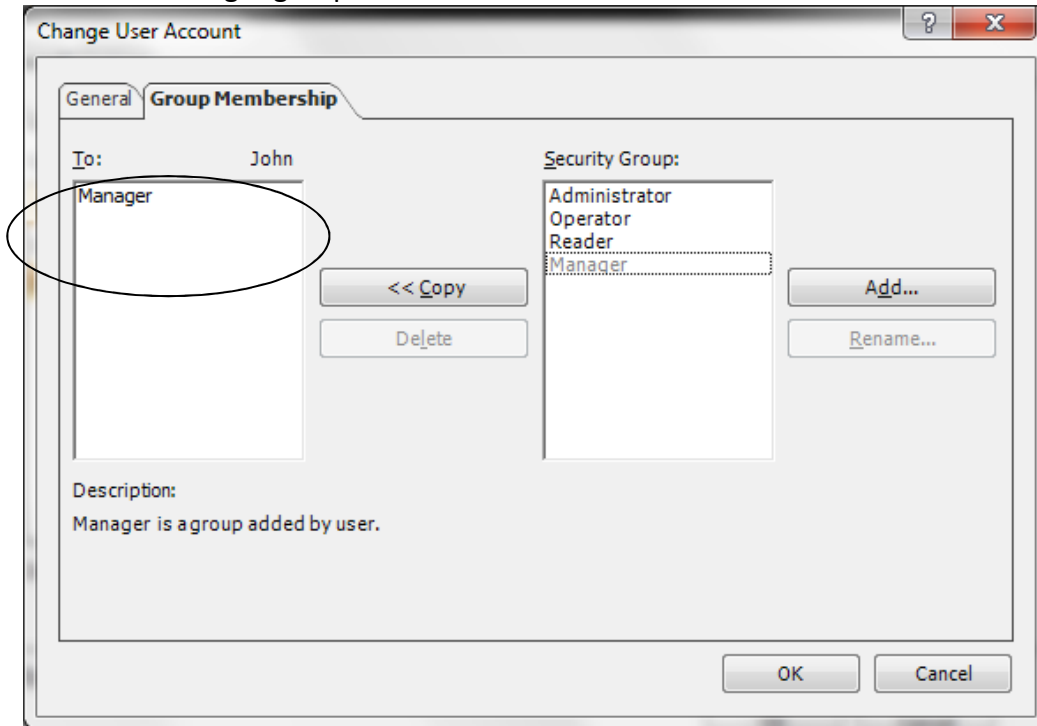
Click OK to close the dialog box.



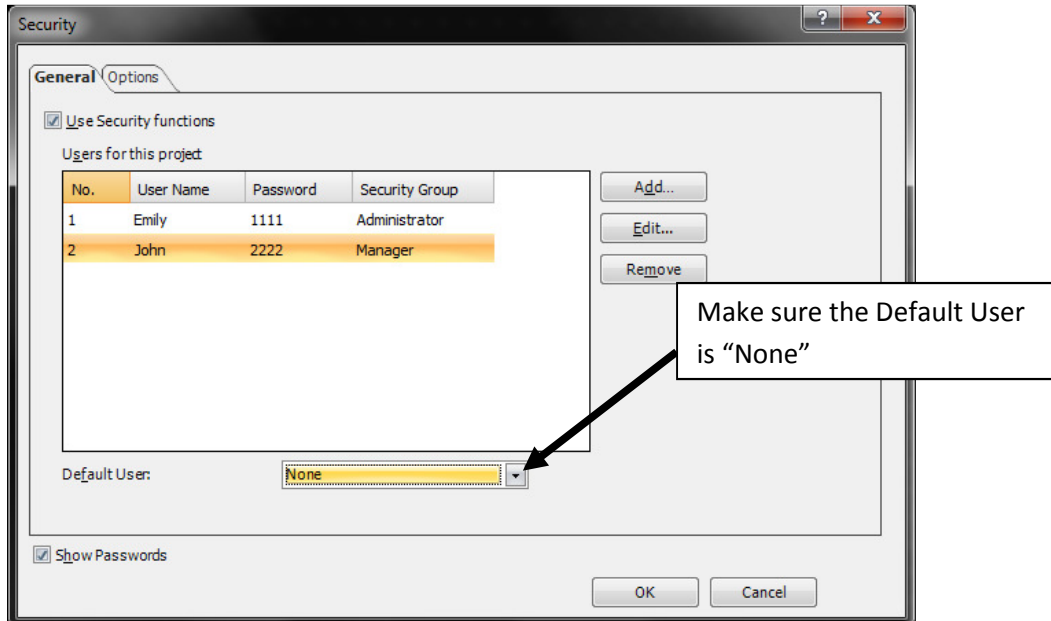
The Group No. 4, Manager Group is added to the Security Group. You can add up to 15 groups.



9. In the Security Group, select the Manager and press the “<< Copy” button. Now, John is under the “Manager group.” Click the OK button to continue.



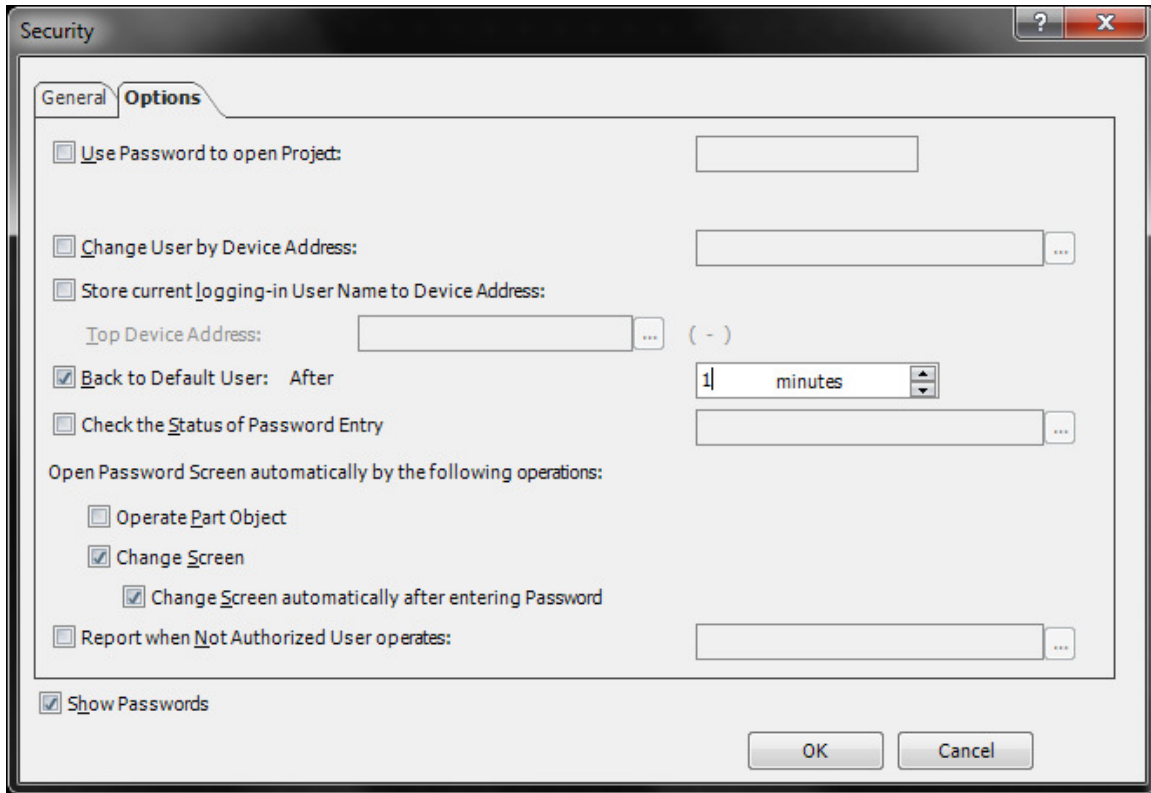
10. Shown here is the summary on who is registered in the User Account.



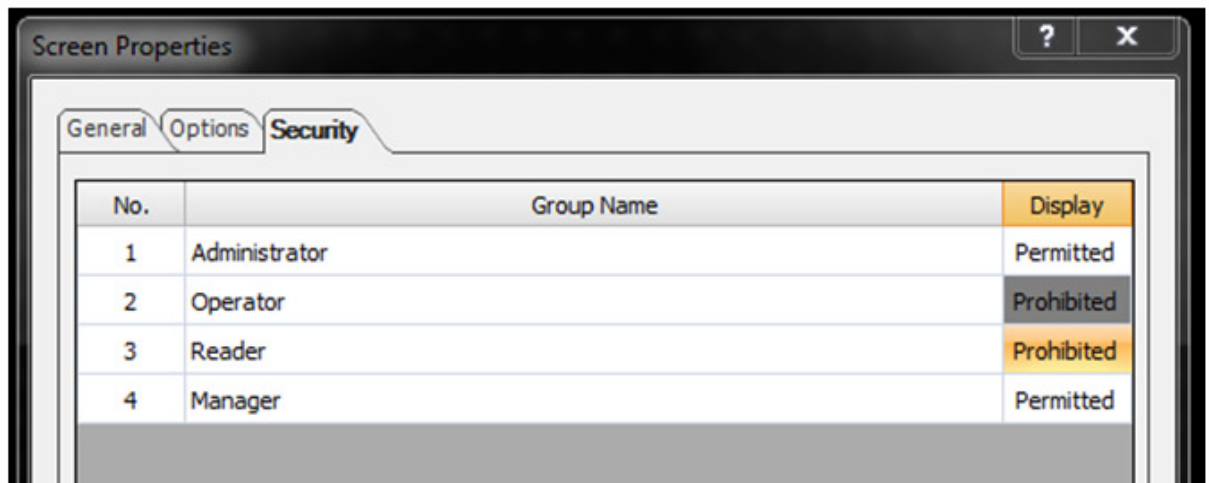
Note: The security groups that you create can be used in multiple user accounts.

11. Click the “Options” tab. Check “Back to Default User: After” enter 1 minute (assign 1 minute). This will allow the screen to reset the password after 1 min the correct password is entered.

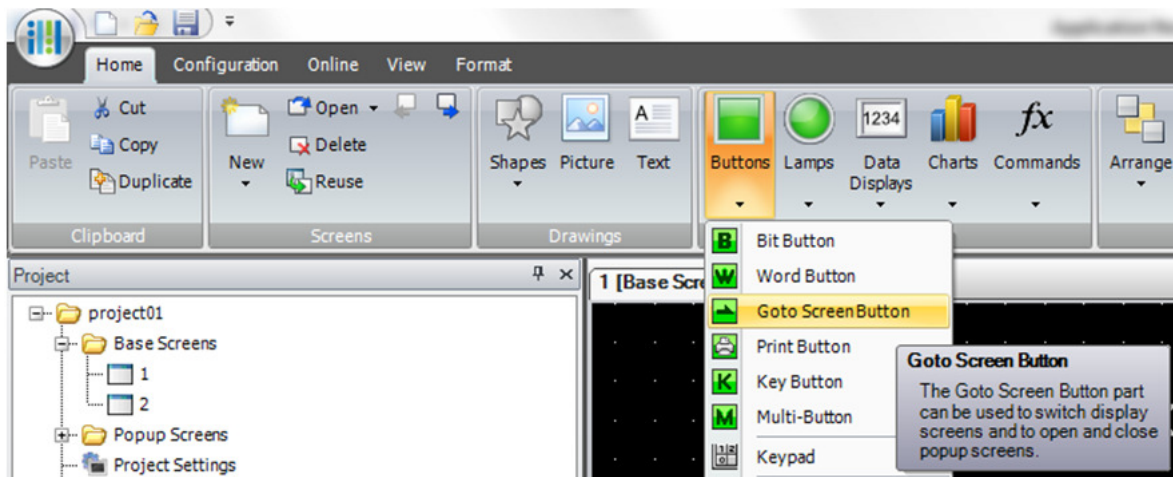
Click the OK button to close Security dialog box.



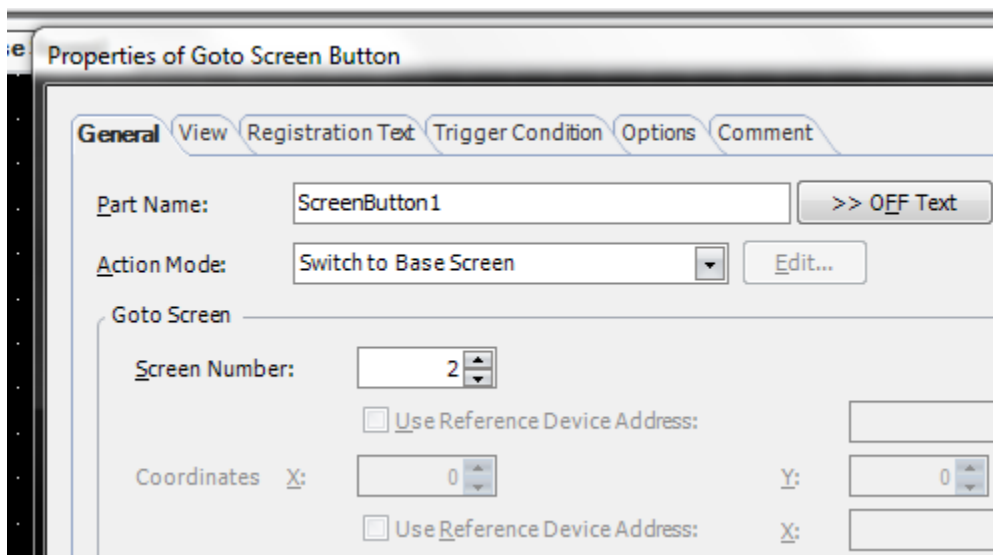
12. On Base Screen #2 in this example will have password protection, double click anywhere on the screen to configure the Screen Properties. Under Security tab, select the group or groups that will have access to Screen 2. In this example, only Administrator and Manager Groups will have access to Screen 2. At the Display Column, you can change either **Permitted** or **Prohibited** for the security group. Click OK.



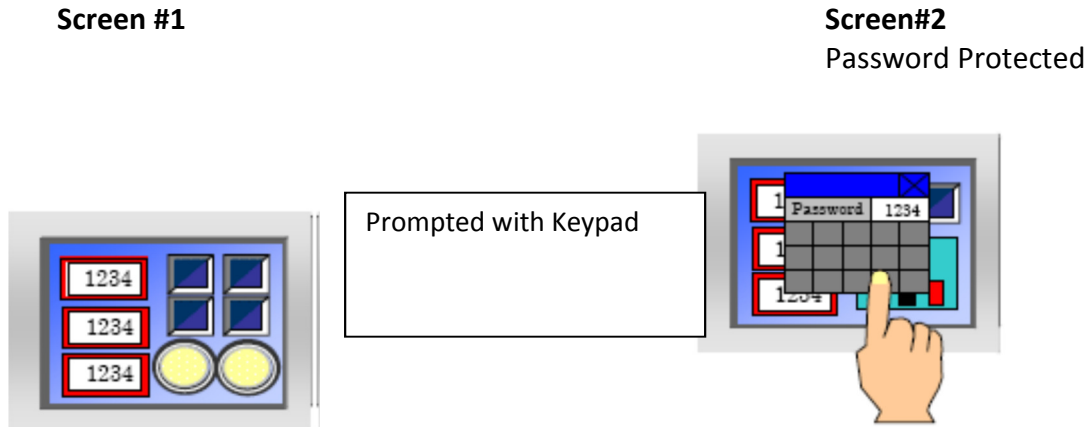
13) Next, Click Buttons → Goto Screen Button and place it on a Base Screen.



Double click Goto Screen Button to open the Properties of Goto Screen Button. Select “Switch to Base Screen” in Action Mode and Change the Screen Number to 2.
Click OK to close the dialog box.



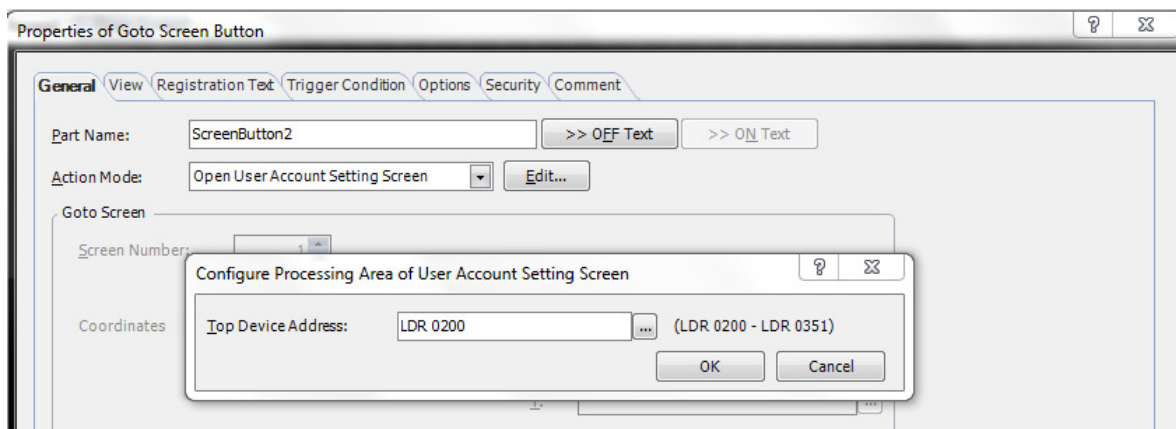
In this example, Screen #2 is password protected.
John is the only person who has access to Screen #2.



Please follow the step below to **Add, Delete or Edit User Account** on the touchscreen.

The **User Account Setting Screen** can be opened by using a Goto Screen Button, Multi-Button, Goto Screen Command, or Multi-Command.

- 14) Click Buttons again → GotoScreen Button. Double click Goto Screen Button to open the Properties of Goto Screen Button. Select “Open User Account Setting Screen” in Action Mode and enter “Top Device Address” and Click OK and OK to close the dialog box.



This concludes the settings on the Security Function in NV4.